

*Quick Silver*  
JEWELRY • STAMPING TOOL & DIE  
**MINT**

CUSTOM STAMPS AND DIES



**QUICK SILVER MINT**

**Michael Stewart**

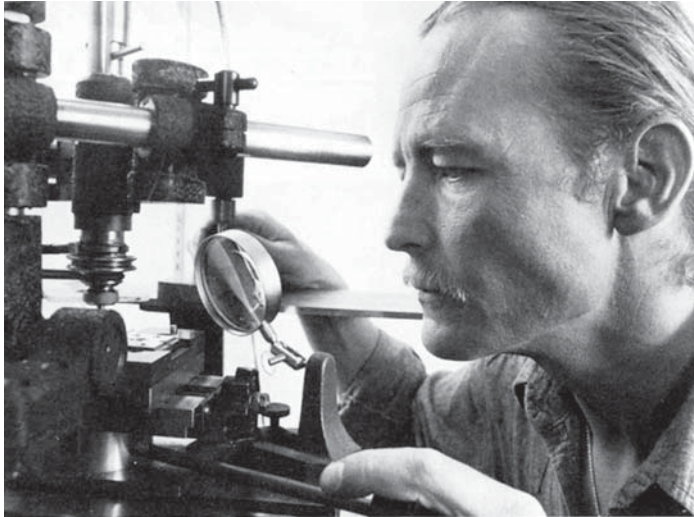
**228 1/2 North Corry • Fort Bragg, CA 95437**

**Phone: (707) 367-1346**

**[www.QuickSilver.com](http://www.QuickSilver.com)**

# QUICK SILVER MINT-CUSTOM STAMPS AND DIES

Page 2



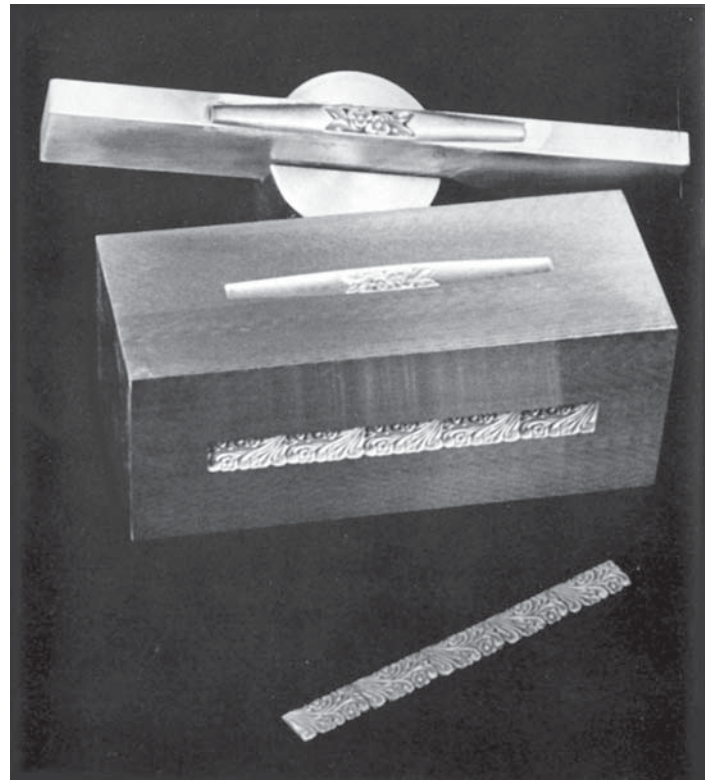
## CUSTOM STAMPS AND DIES

Quick Silver makes custom tooling and dies to fit your existing machinery or can assist you in selecting the right machinery to fit your production needs. If you do not have the equipment needed to produce your parts, Quick Silver can produce custom finished parts for you.

For a quote on your current project, please send a sample or fax us a photo copy or drawing of what you have in mind.

## DIE DUPLICATION

Quick Silver offers a new source for dies and molds. Using the latest technology and equipment, such as Wire and Plunger EDM Machines, Quick Silver can make dies from an existing jewelry part. Shapes and textures are copied using male and female dies to duplicate the original part. Quick Silver can work from an existing object, eliminating most tooling cost to you and thereby creating a faster turn around time.

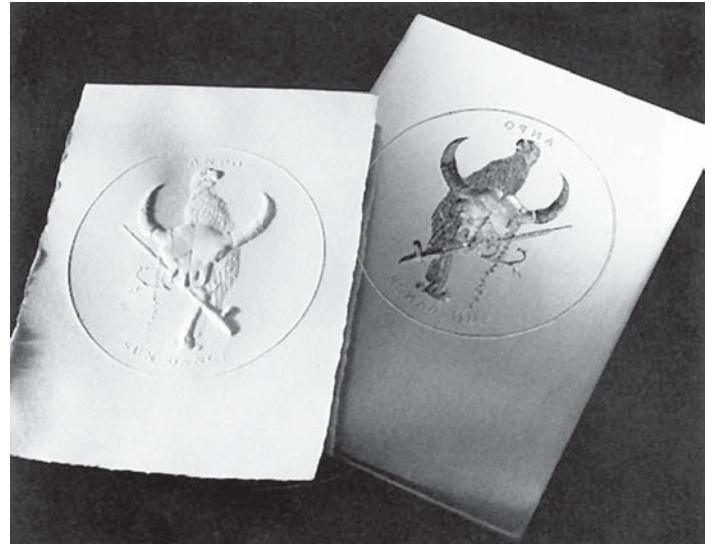


# QUICK SILVER MINT-CUSTOM STAMPS AND DIES

Page 3

## EMBOSSING DIES

Embossing dies are suitable for thin metals or paper. Two or three dimensional male and female dies are made of tool steel or a brass alloy for paper.



## THREE DIMENSIONAL COINING DIES

Quick Silver manufactures Three Dimensional Coining Dies using a several step process. Your artwork is sculpted into a three-dimensional model to produce a reverse mold template. Skilled craftspeople at Quick Silver take the template and engrave your pattern directly into die steel or graphite with the help of an EDM and three-dimensional engraving machine.

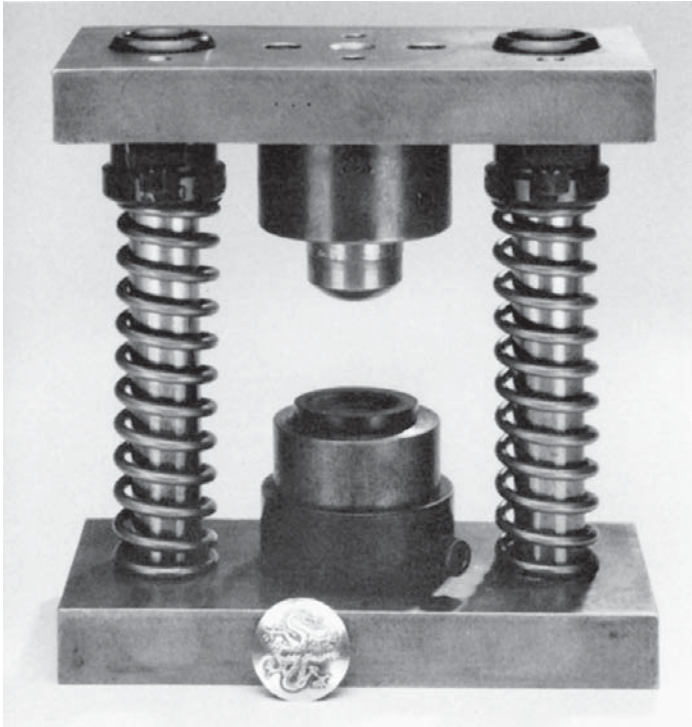
## TWO DIMENSIONAL STAMPS

Beginning with your "camera ready" artwork, a template is made. This template is attached to a pantographic engraving machine, is reduced and then engraved by a skilled craftsman directly into a steel die or graphite electrode. The graphite electrode is then affixed to an Electrical discharge Machine or EDM, which burns the details into the die steel.



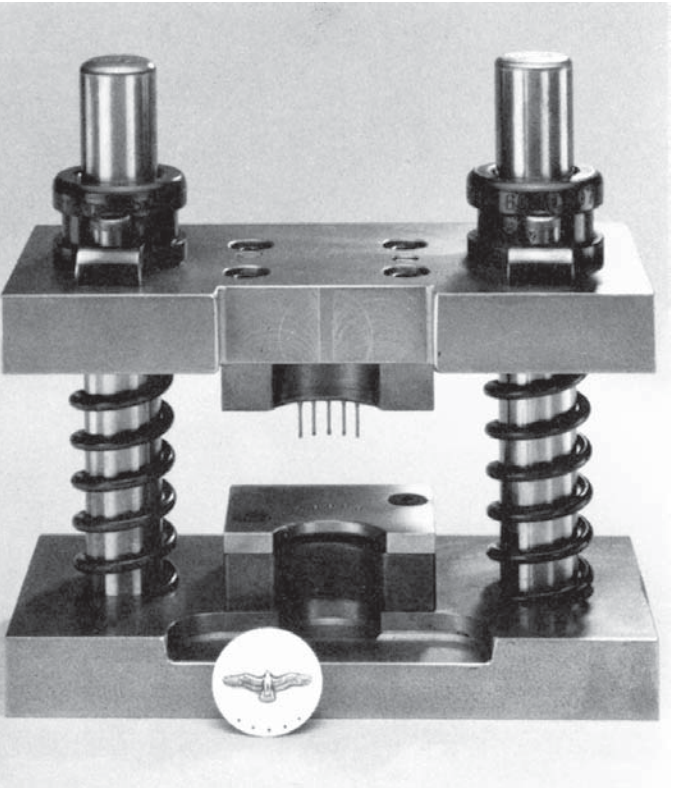
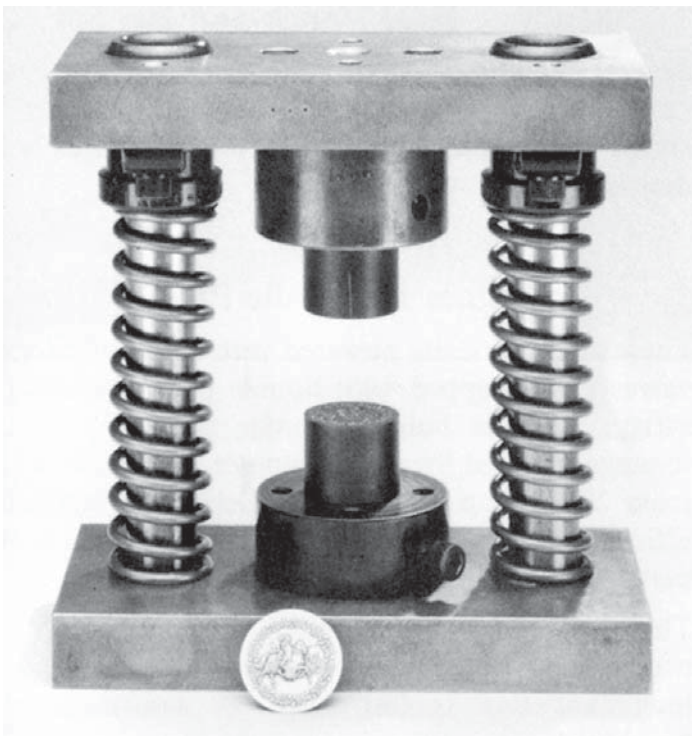
# QUICK SILVER MINT-CUSTOM STAMPS AND DIES

Page 4



## MULTIPURPOSE DIE SET

This tool can be used for printing, embossing or doming with appropriate interchangeable dies and tooling.



## MULTI-HOLE PUNCH AND DIE SET

Several small holes can be punched at a time into a variety of shapes and sizes. Punches can be added or removed depending on the number of holes desired.

## CUSTOM HYDRAULIC PRESSES

Custom Hydraulic Presses are electrically powered with automatic return valves and are equipped with double palm buttons for safety. Each is built to order in sizes from 20 to 100 tons.

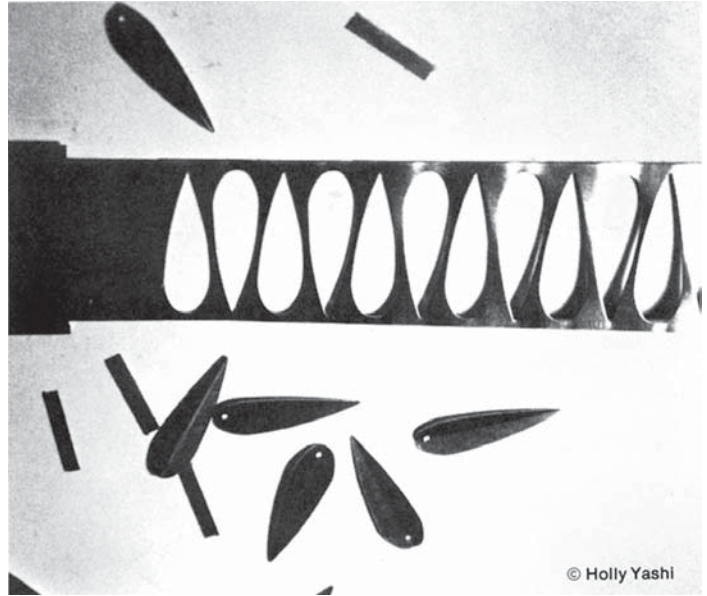
Depending upon the efficiency of the operator in loading each part by hand, the press can produce up to 500 parts per hour.

These machines are designed to be used in the production of parts—using a variety of methods with interchangeable tooling—such as shown in this brochure.



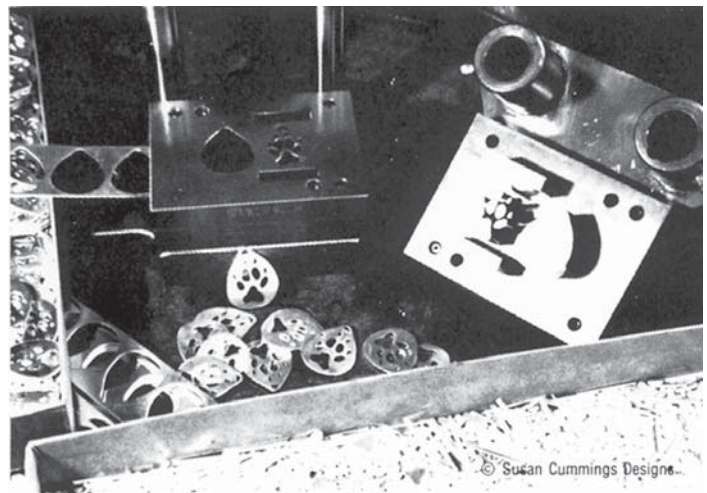
## STRIKING STAMPS

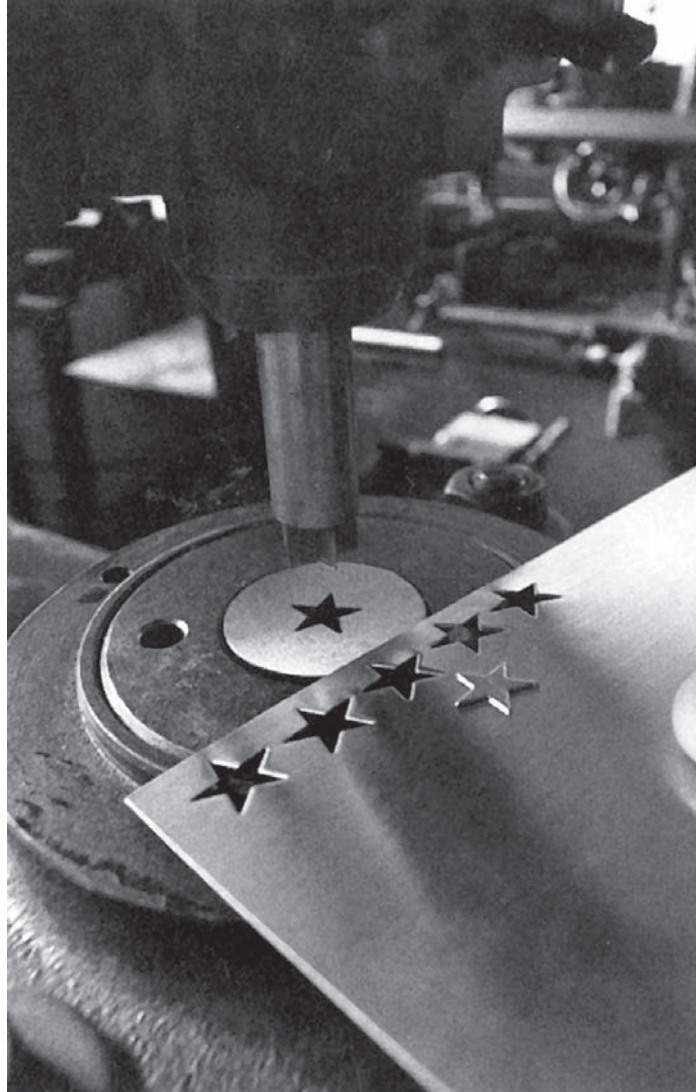
Striking stamps are suitable for metal, wood, plastic or leather. These two dimensional stamps are created from hardened die steel to ensure a lifetime of use. Depending on the material to be struck, dies with broad areas may require the use of high tonnage presses in order to make a satisfactory print.



## MULTI-STAGE DIE SETS

Multi-Staged Die Sets are designed for fast production of a large quantity of parts. Several steps are necessary to produce a part from a long strip of metal, i.e. coining or embossing a design, punching out any inside shapes or holes, and finally blanking out the shape or finished part.





## **BLANKING PUNCH AND DIE**

A kick press or single-stage die set is useful for conserving materials and keeping scrap to a minimum. This is accomplished by punching out shapes close to each other.

Quick Silver cuts the punch and die set on a wire EDM, allowing a close clearance tolerance. This results in the production of parts free of sharp burrs.